

13920830786

suhui12345@126.com







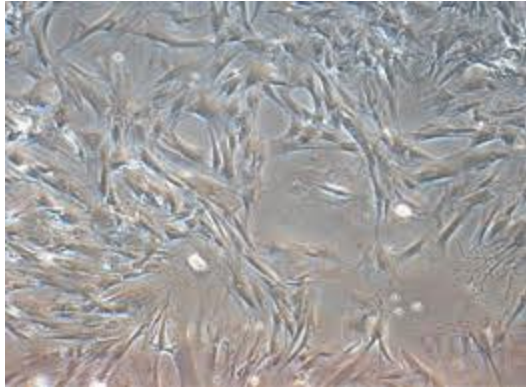
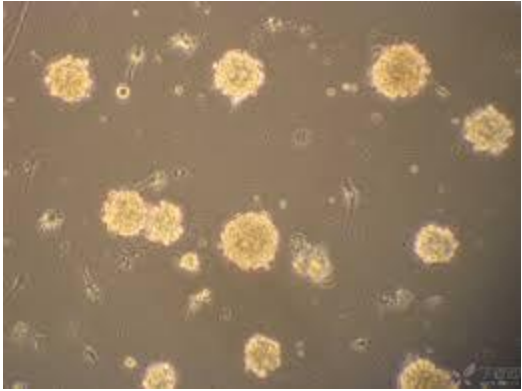














•

1 10⁶ /ml

•

10%V/V

DMSO

•

•

—



4h

•

•

5



37

70%

24h

-
-
-
-
-





308



308



1

308



2

308



3

201





细胞室实验流程

培训

参加细胞培养培训（每年9月份），完成考核试题



开卡

填写申请表，导师和中心主任签字



申请实验所需用品

找主管老师申请生物安全柜、培养箱，冰箱、储物柜，拖鞋、鞋柜



准备实验耗材

准备细胞室专用白大衣、口罩、手套，准备细胞培养实验耗材



开始实验

实验过程中注意保持实验室卫生，根据值日安排做好值日



紫外灭菌



更换拖鞋



风淋



更换白大衣



实验



紫外灭菌



1

a.

b. 5s

c.

d.

e. PBS



2.

a.

b.

5min

c.

10cm

d.







()





3.

a.

5 min

b.

c.

d. 75%

e. 5min

f.



1.

2.

3.

4

4.

5.





1. _____

2. CO₂ _____

3. _____

4. _____

308

317

310

314





20-30



a. 20 5

b. 75%

c. 20

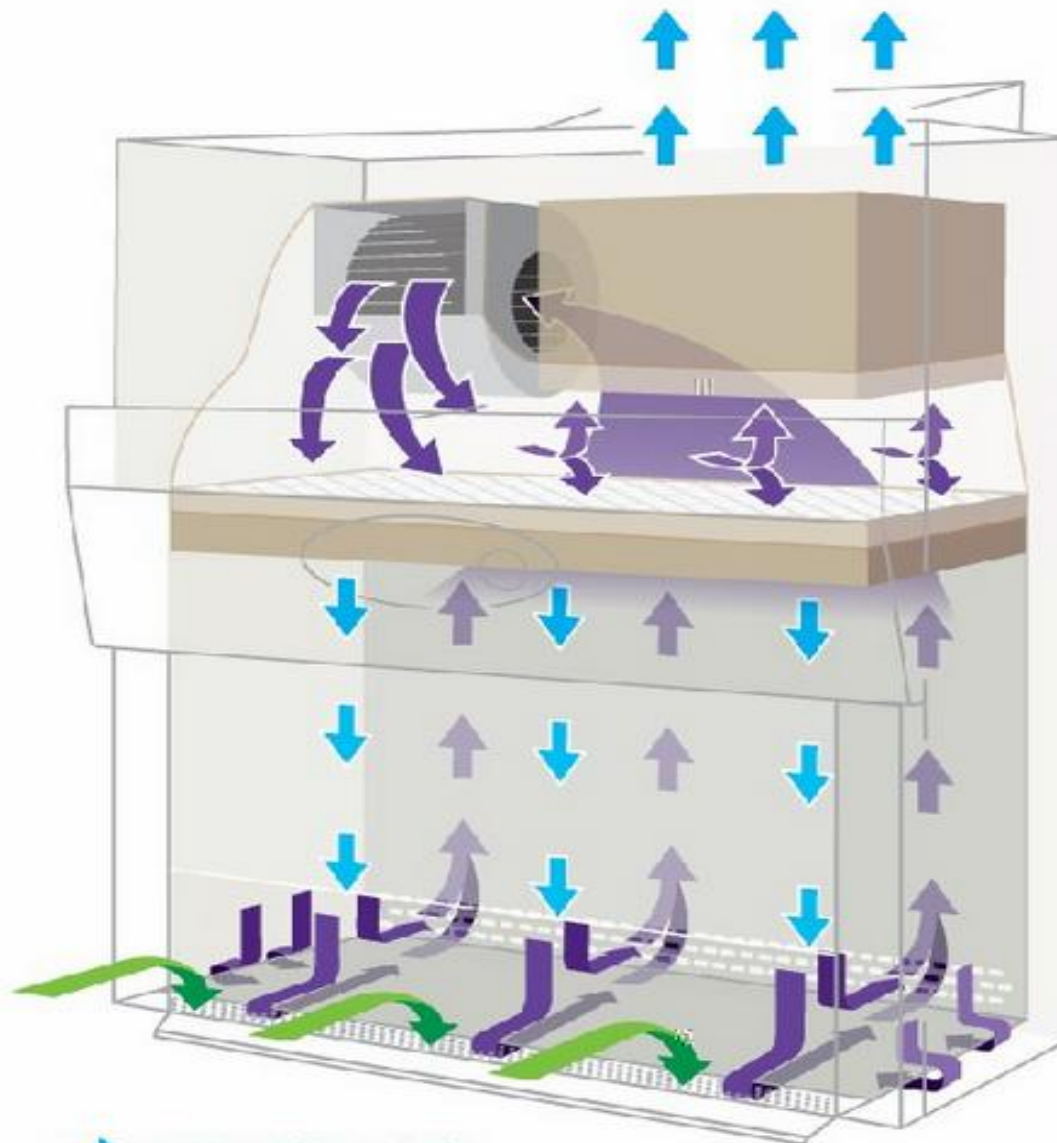
d.





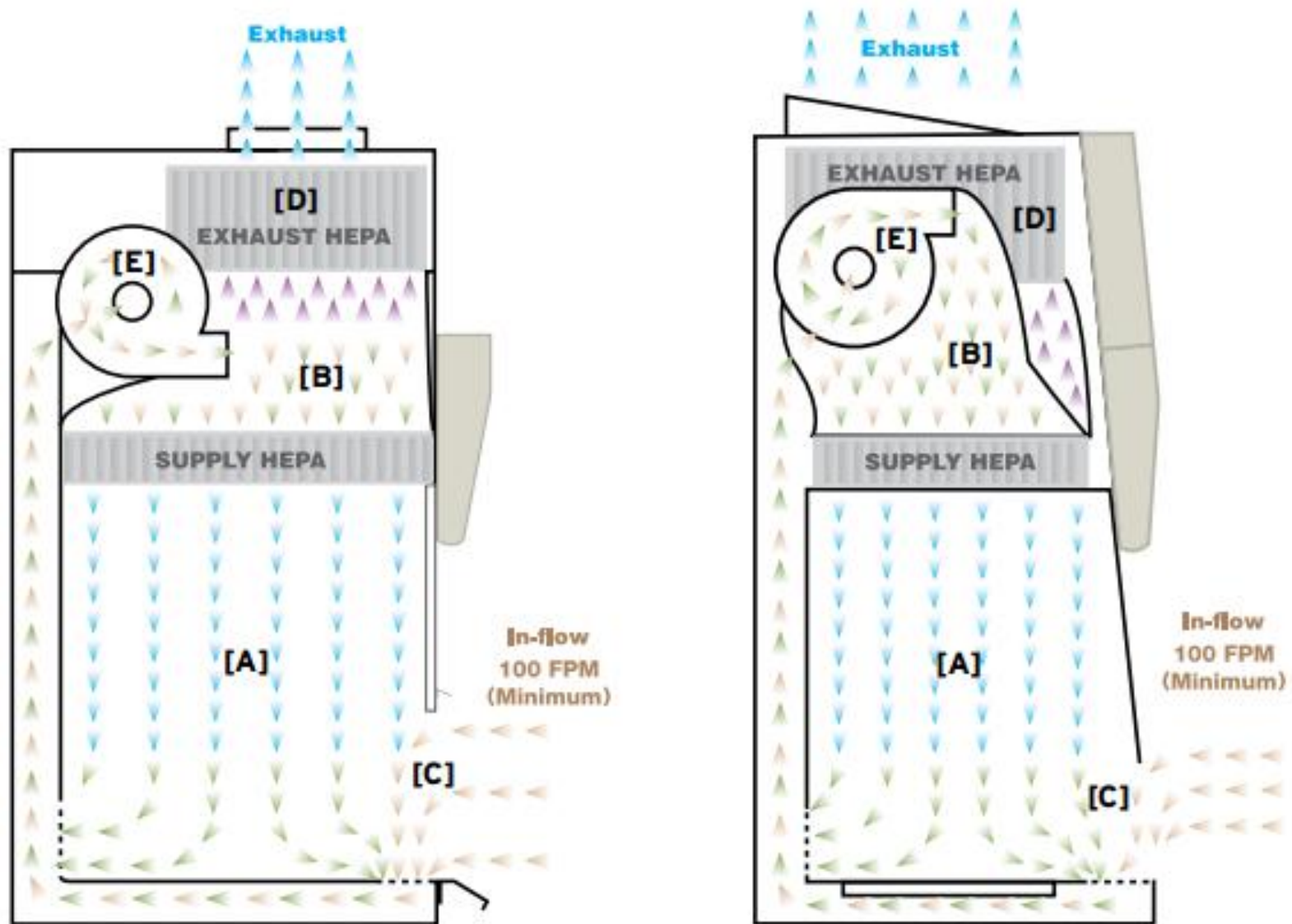
Class II, Type A2

Air In-flow 70% Recirculated vs. 30% Exhausted



-  HEPA Filtered Air
-  Contaminated Worksurface Air
-  Contaminated Room Air





Class II Type A2 Biological Safety Cabinet
Airflow Schematics

▶ **HEPA FILTERED AIR**
▶ **ROOM AIR**

▶ **CONTAMINATED WORK SURFACE AIR**
▶ **CONTAMINATED EXHAUST AIR**





a. 75%

b.

c.

d.

,

e. CO_2

f.

CO_2



1.

2.

70%

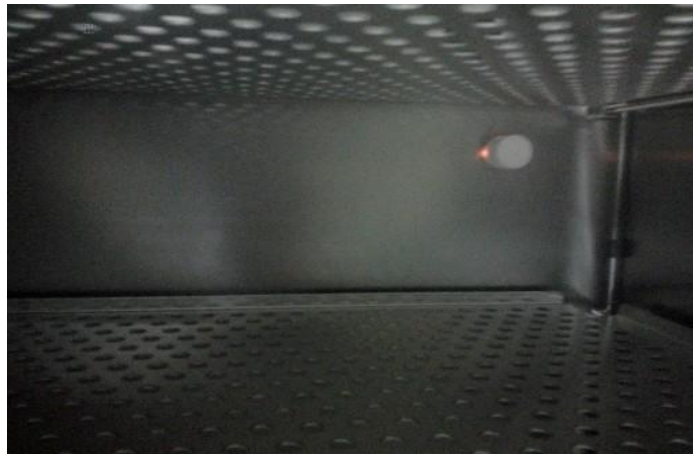
30%

1.

CO2

2.







a.

b.

c.



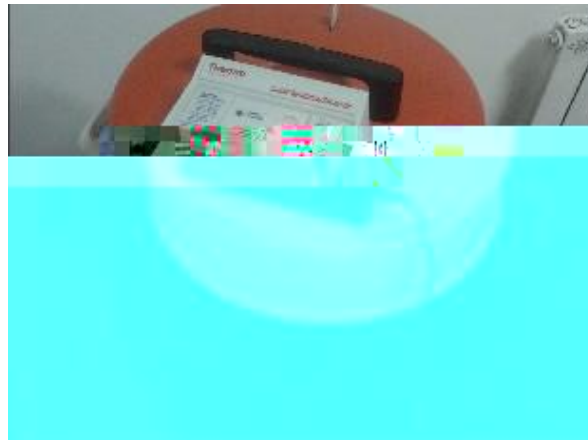
PBS

75%





Reset







60

4h





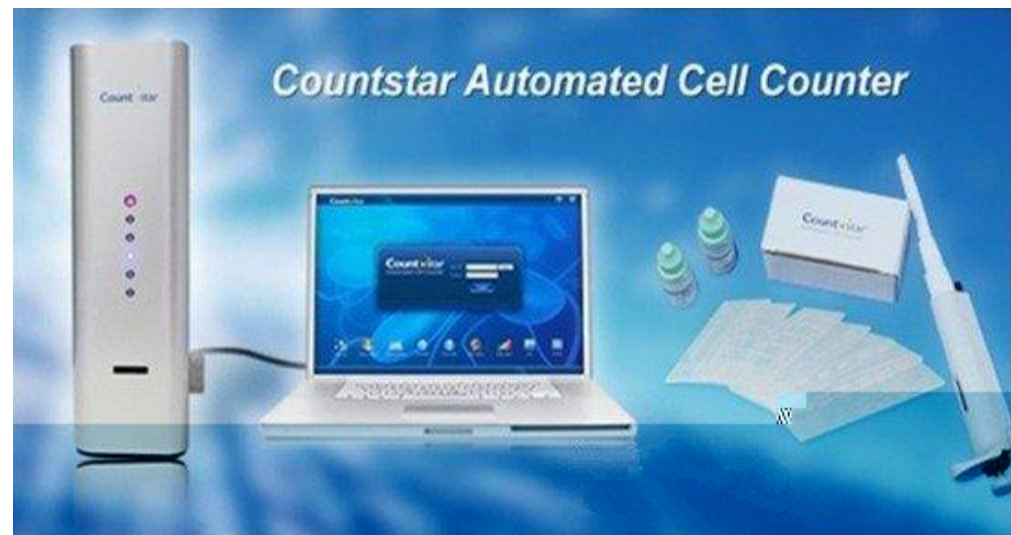
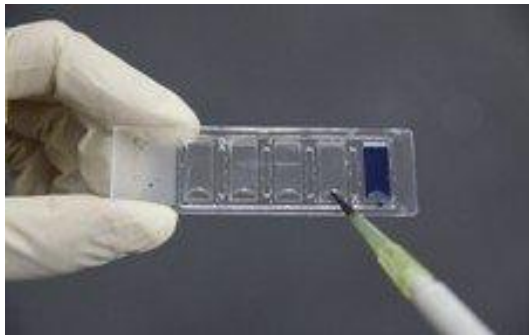
1 10^4 3 10^7 /ml



5-



20





a.

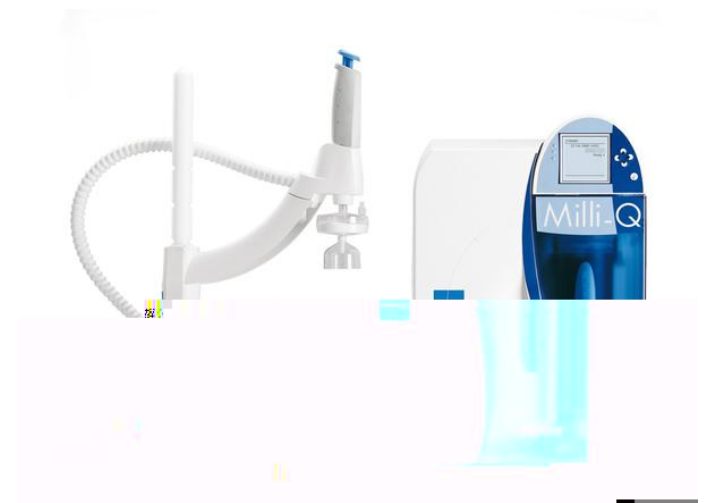
b.

16%

c.

d.

e.







PH

PH

PH





C02/02/N2

/

DMSO



